

# MONTHLY MEMBERSHIP PROGRESS REPORT

District 10

Results as of: 6/30/2024

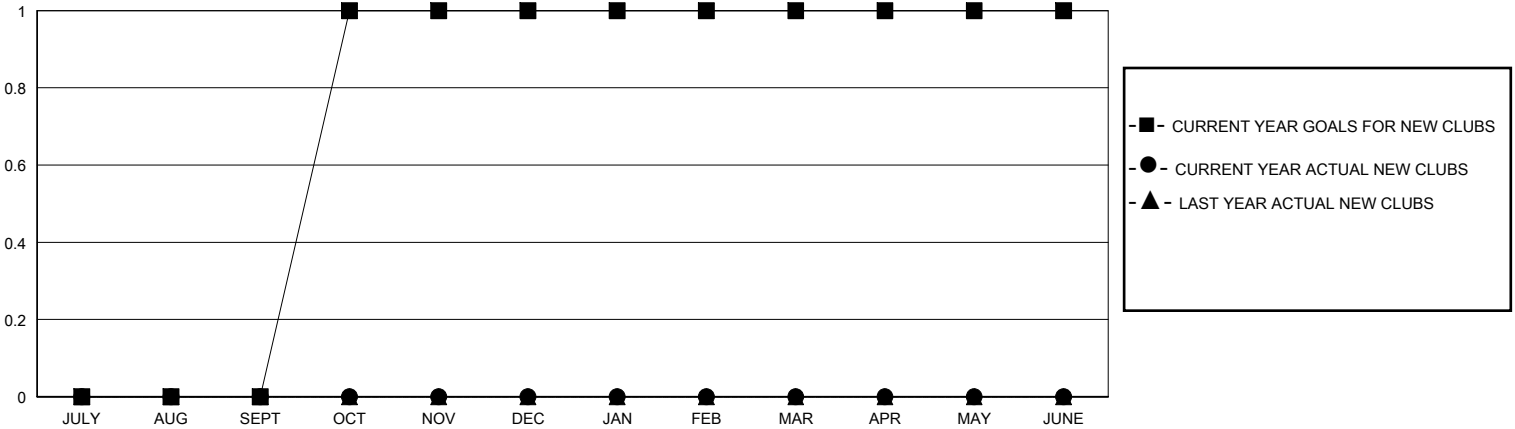
GMT:

LOCATION MICHIGAN

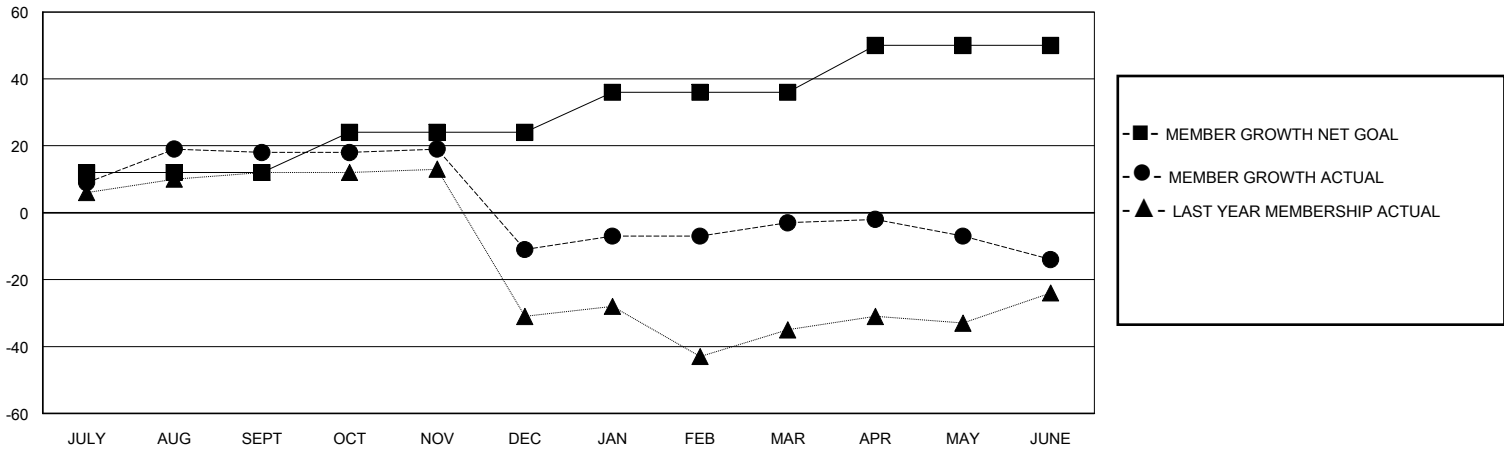
GMT CA

Clubs				Members			
RESULTS FOR 2023-2024				RESULTS FOR 2023-2024			
QUARTER	NEW CLUB GOAL	NEW CLUBS	DROPPED CLUBS	QUARTER	MEMBER GROWTH NET GOAL	MEMBER GROWTH ACTUAL	DROPPED MEMBERS ACTUAL (including transfers)
JULY/AUG/SEPT	0	0	0	JULY/AUG/SEPT	12	34	16
OCT/NOV/DEC	1	0	1	OCT/NOV/DEC	12	23	49
JAN/FEB/MAR	0	0	0	JAN/FEB/MAR	12	37	27
APR/MAY/JUNE	0	0	0	APR/MAY/JUNE	14	35	46

GOALS AND ACTUAL NEW CLUBS CUMULATIVE



GOALS AND ACTUAL MEMBERS CUMULATIVE



DROPPED CLUBS: 1	35 CLUBS OF 48 ADDED 1 OR MORE NEW MEMBERS	<b>GENDER DISTRIBUTION</b> MALE 876 (67.08%) FEMALE 428 (32.77%)
<b>DROPPED MEMBERS</b> DECEASED 18 CLUB CANCELLED 22 OTHER 98 TOTAL 138	<a href="#">CLICK HERE FOR CUMULATIVE MEMBERSHIP DATA</a>	TOTAL FAMILY UNIT MEMBERS 204 FAMILY MEMBERS PAYING HALF DUES 103